

043489

RECEIVED
LARAMIE COUNTY
CHEYENNE, WY.

CERTIFIED LAND CORNER RECORDATION

'88 MAY 5 PM 1 29

DESCRIPTION OF CORNER EVIDENCE FOUND, AND ORIGINAL RECORD (If known)
Found no evidence of previous monumentation.

1/4 S.24
S.25
T.15N., R.69W.
6th P.M.

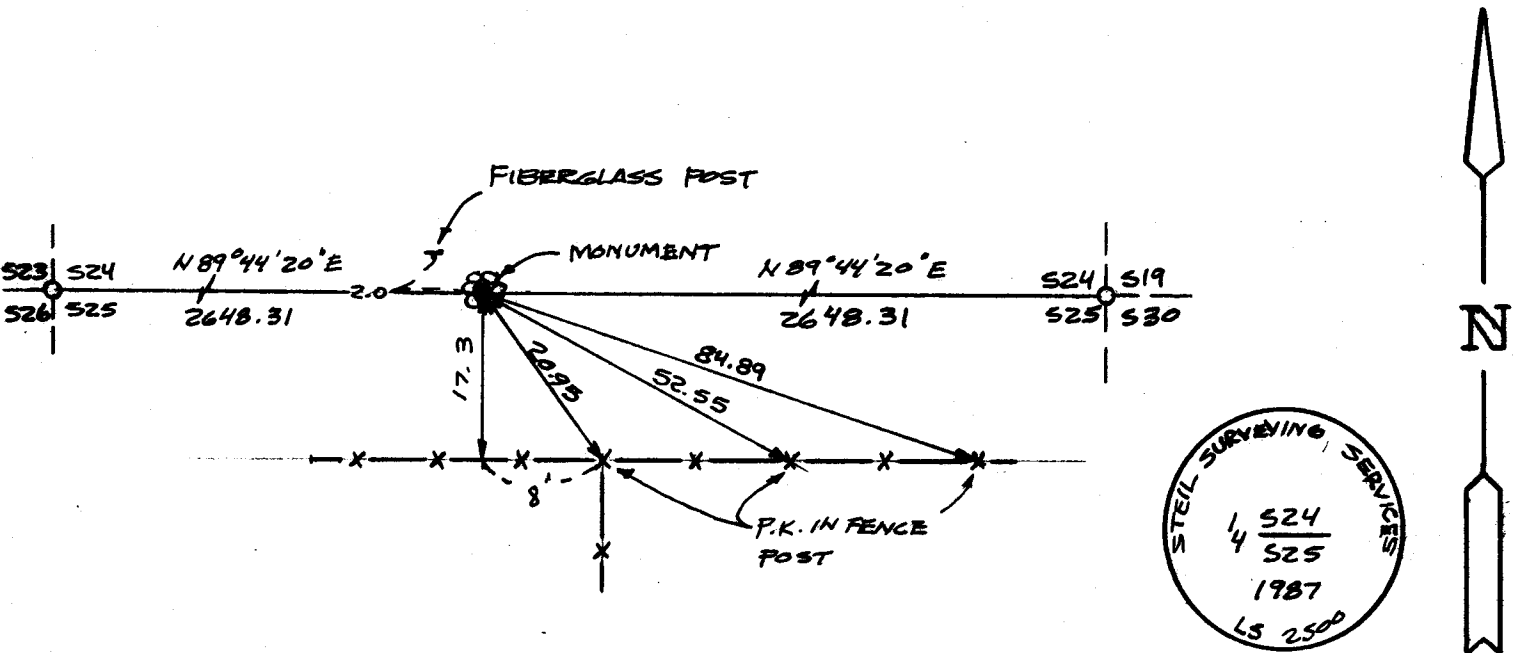
G.L.O. Record: Granite boulder 12" x 10" x 5".

DESCRIPTION OF MONUMENT AND ACCESSORIES ESTABLISHED
TO PERPETUATE THE ORIGINAL LOCATION OF THIS CORNER:

At the corner: Set 3" x 30" long aluminum pipe with 3 1/2" aluminum cap projecting 0.4 feet above ground with a collar of stone and stamped as shown below at single proportion distance.

Accessories : See ties below.

SKETCH, WITH COURSE AND DISTANCE TO ADJACENT CORNER IF DETERMINED IN THIS SURVEY.
(May Sketch or Paste Reproduction on Reverse Side.)



I, John A. Steil certify that I have carefully performed or reviewed the work done on the diagrammed corner as reported on this recordation form and approve the same.

John A. Steil
Signature of Surveyor

L.S. 2500
Registration No.

STATE OF WYOMING,
Office of Clerk and Recorder,
County of Laramie

This "corner record" was filed for record on the 5th day of May, 1988, was noted on the cross-index plat and is assigned page No. 2005, in book No. 1259

Janet C. Whitcomb
County Official

Cross Index No. <u>K-23</u>	T. <u>15N</u>	R. <u>69W</u>	Mer. <u>6th</u>
_____	T. _____	R. _____	Mer. _____
_____	T. _____	R. _____	Mer. _____
_____	T. _____	R. _____	Mer. _____
_____	T. _____	R. _____	Mer. _____
_____	T. _____	R. _____	Mer. _____
_____	T. _____	R. _____	Mer. _____

BOOK 1259

2005